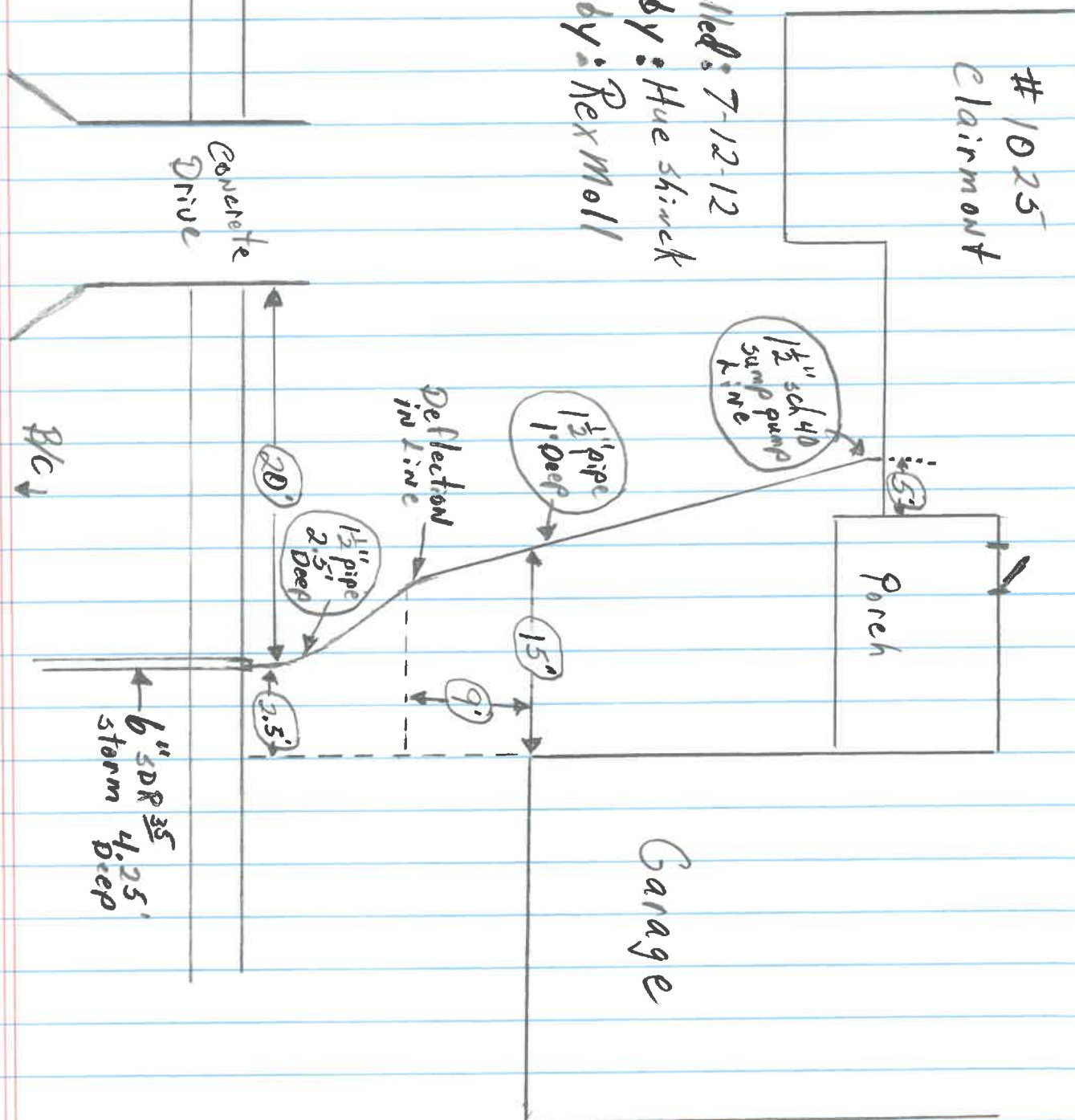


# 1025  
Clairmont

Date Installed: 7-12-12  
Installed by: Hue Shreck  
Inspected by: Rex Moll



Concrete Drive

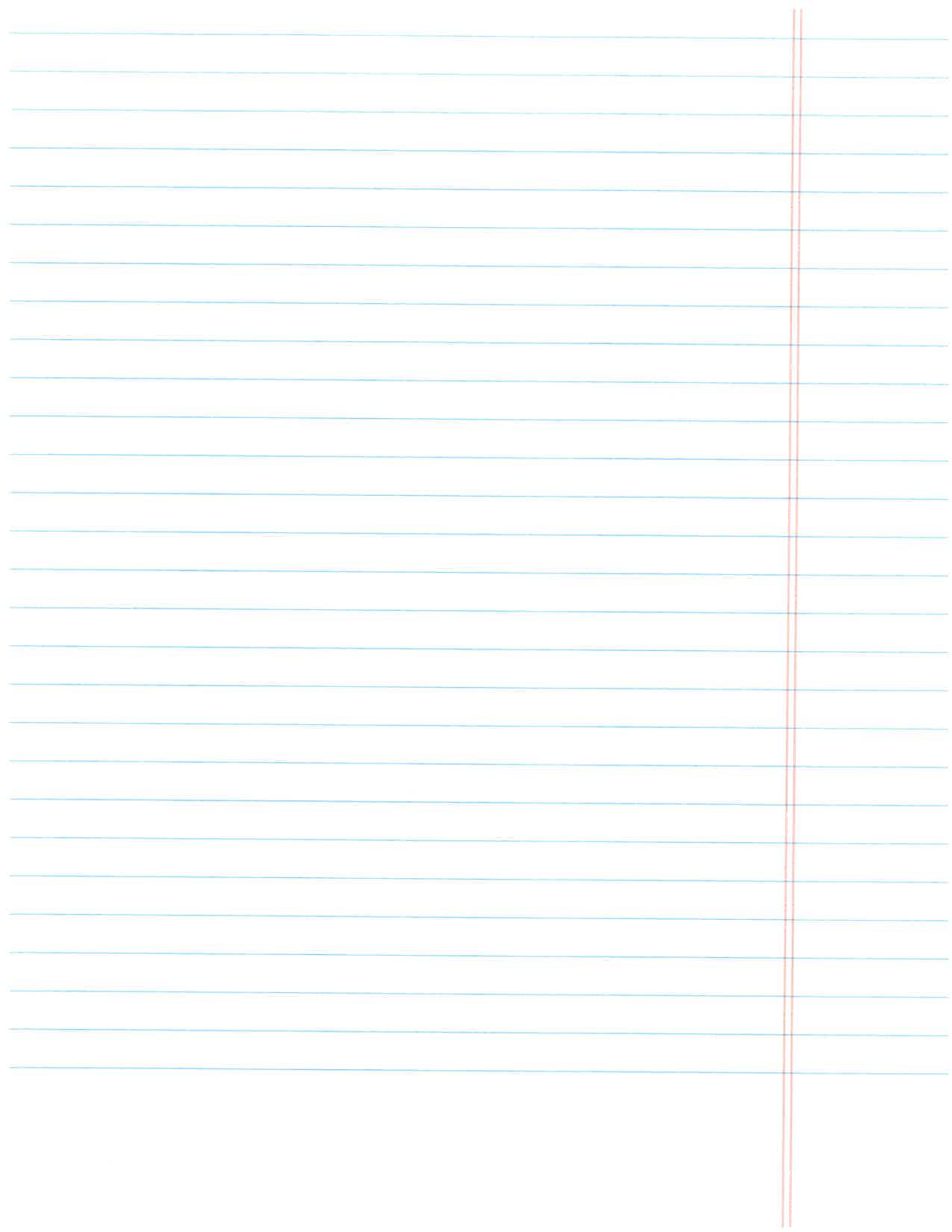
Porch

Garage

Deflection in Line

6" SDR 35  
storm drain  
4.25' deep

B/C



# 1025  
Clairmont

Date Installed: 7-12-12  
Installed by: Hue Shrick  
Inspected by: Rex Moll

